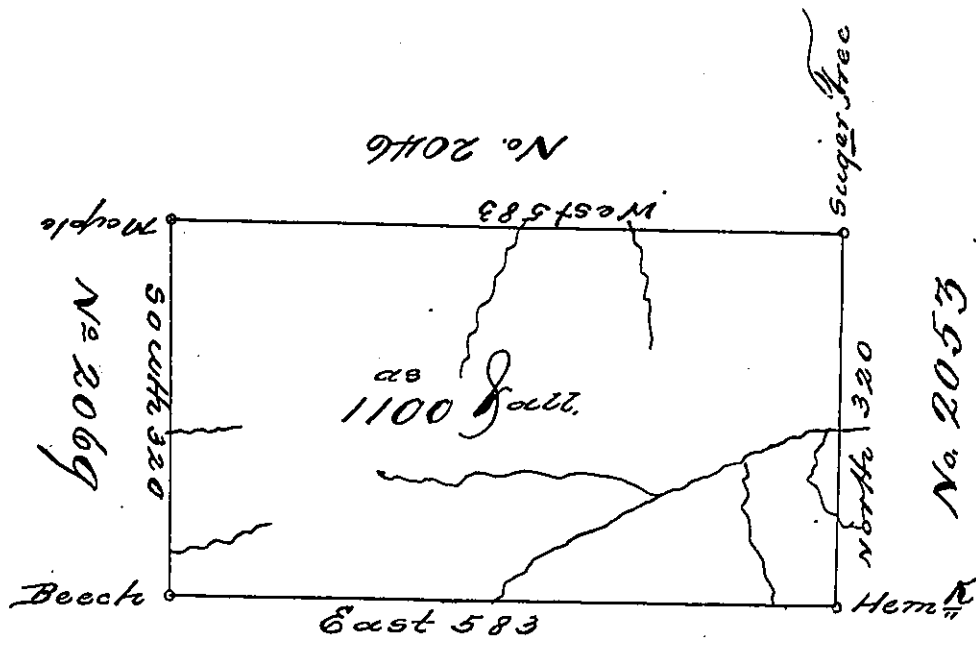


No. 57



Willem Wilink and Others Land

Situate about two miles west of the Portage Branch of the Allegheny and about five miles south of the Allegheny River in Northumberland County, containing 1100 acres and the usual allowance for Roads &c. surveyed June 12th 1793. for Thomas Wilking in pursuance of a warrant No. 2070 bearing date the 12th December 1792.

Daniel Brodhead Esq^r.
J. G.

John Loran D. J.

IN TESTIMONY that the above is a copy of the original remaining on file in the Department of Internal Affairs of Pennsylvania, made conformably to an Act of Assembly approved the 16th day of February, 1833, I have hereunto set my Hand and caused the Seal of said Department to be affixed at Harrisburg, this seventh day of May, 1901,

James W. Pitts
Secretary of Internal Affairs.